

CompositWood<sup>®</sup>  
*Architectural Series* Windows  
by INTERSTATE  
Engineered to Last . . . *Beautifully*







# CompositWood<sup>®</sup> *Architectural Series* Windows by INTERSTATE

**New Construction - 4 9/16" Jamb**

CompositWood *Architectural Series*, the next generation of windows, is a revolutionary material blended with timeless design that surpasses the ambitions of even the most well known window manufacturers.

*Revolutionary  
Beautiful  
Efficient  
Timeless*

## **WHY COMPOSITWOOD?**

Nothing defines a home like the elegance and warmth of wood windows, but the maintenance problems and expenses associated with wood are simply overwhelming.

Metal and vinyl clad wood windows were only partial solutions. In the industry-wide pursuit of window excellence, CompositWood is the answer.



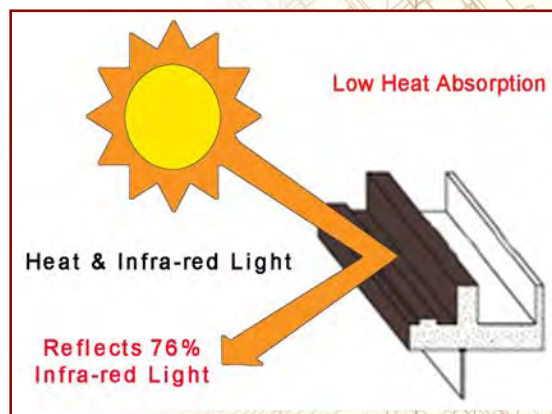
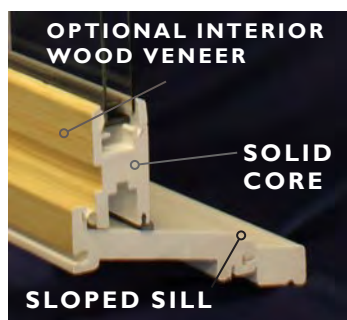
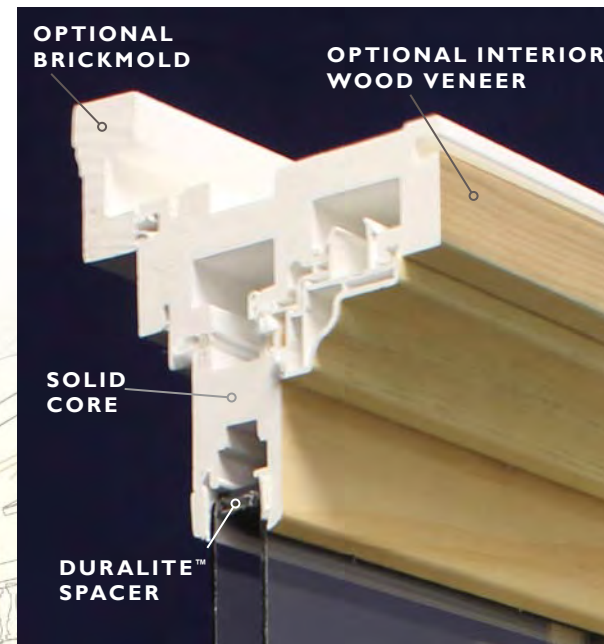


## WHAT IS COMPOSITWOOD®?

CompositWood blends the elegant appearance of a true wood window with the maintenance freedom of vinyl, the strength of metal, cutting edge energy savings and ease of operation into a beautiful and durable window system.

Frames and sashes are made from a proprietary mix of specialty polymer and acrylic resins, creating an “engineered wood.”

CompositWood *Architectural Series* provides the warmth of a finely milled wood window without the problems associated with wood and clad wood windows. **CompositWood is simply the best window you can buy.**



## EXCLUSIVE SuperCap™ SURFACE TECHNOLOGY

SuperCap provides a permanent finished surface that performs in the harshest of weather conditions. Proven with years of extreme outdoor sun exposure testing in Florida and Arizona, SuperCap meets or exceeds industry color standards and remains dimensionally stable in direct sun and high heat conditions. With a lifetime of virtually no-maintenance benefits, this tough, fusion-bonded surface protects against fading from ultraviolet light exposure, erosion, chalking and cracking to keep windows and doors looking good over time.



## Standard Features

- Classic wood window slope sill design adds real wood window elegance.
- Low K Value solid core frame and sash help reduce condensation and potential for mold and mildew.
- Off-set compression sash and integral balance pockets designed for minimal air infiltration and added security.
- **Light Lift™ II** balances for easy opening and closing and high weight carrying capacity.
- Tilt-in sashes for easy cleaning from inside your home.
- Interior window covered with more visible real wood than any clad wood window.
- Standard 4 9/16" jamb depth with optional 6 9/16" and custom jamb depths. Available in finished white or clear Ponderosa pine. Can be painted or stained to match any decor.
- Exclusively designed pre-drilled folding nail fin for new construction applications.
- SuperCap, thermally fused acrylic color layer is 400% thicker and 12X harder than paint.
- Many SuperCap finished exterior frame accessories.
- Full screen included on all operating windows with optional half screen available.

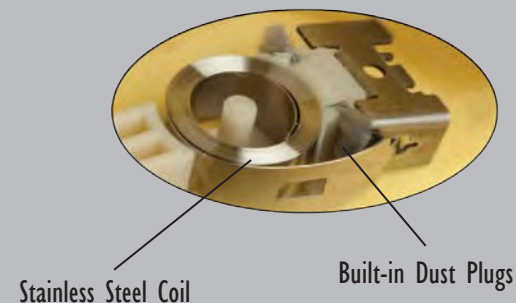


## BALANCE SYSTEM

### LIGHT-LIFT™ II - Constant Force, Constant Clean, T-Lock Balance

CompositWood Architectural Series double hung windows are built exclusively with the Light-Lift II Balance System. Light-Lift II insures consistent, easy-to-manage tension whether opening or closing the sash. It has built in dust plugs which help keep coils free of dust and debris and also act as weatherstripping for additional energy efficiency.

- Smooth and silent operation - sashes glide with ease.
- Enables full egress without limiting sash travel.
- Interlocking pivot bar options for a higher structural performance rating.
- Higher weight carrying capacity - up to 80 pounds!



*"You've got to lift it to believe it!"*



## COMPOSITWOOD ARCHITECTURAL SERIES EXTERIOR FRAME ACCESSORIES



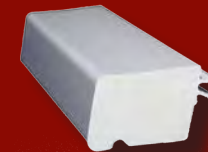
Traditional Decorative  
Curbing



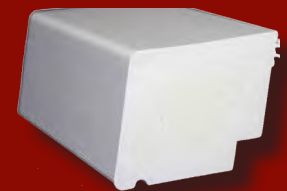
3½" Flat Casing



Brickmold



Traditional Sill Nose



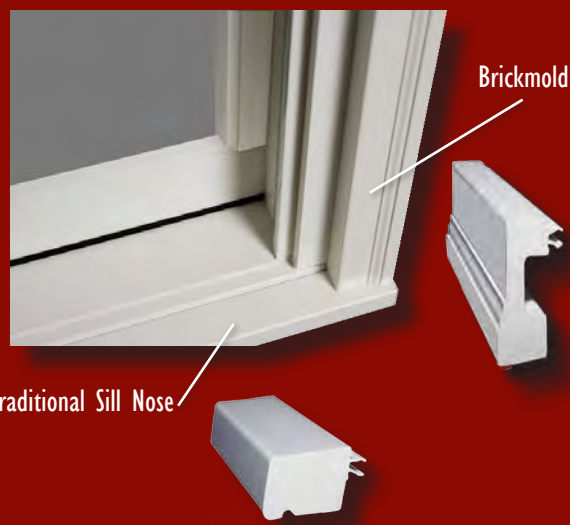
Historical Large Sill Nose

Elegantly designed SuperCap™ finished frame accessories are factory processed, snap-in applied for fast and easy installation. CompositWood accessories are engineered to last a lifetime.



Traditional Decorative  
Curbing

Traditional Sill Nose



Brickmold

Traditional Sill Nose



Traditional Sill Nose

3½" Flat Casing

# COMPOSITWOOD ARCHITECTURAL SERIES WINDOW & DOOR STYLES



Double Hung



Double Hung with  
Eyebrow Plant



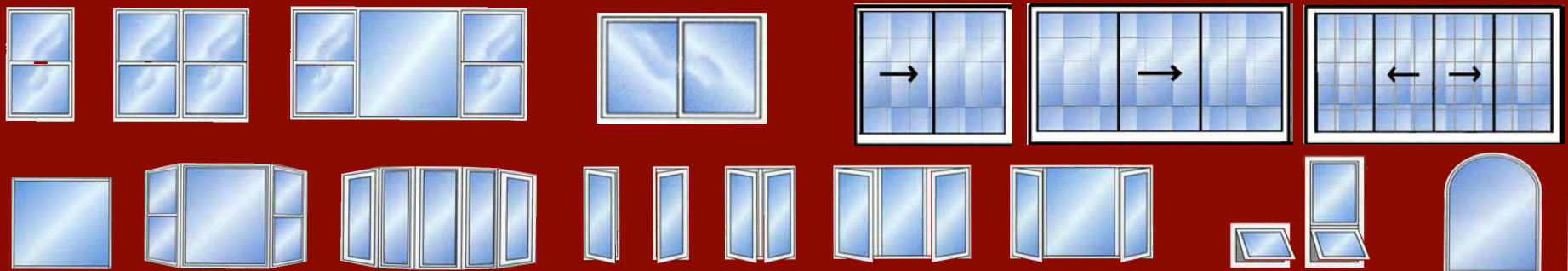
- Double Hung
- Horizontal Slider
- Casement/Awning
- Picture Window with Sash Insert
- Fixed Casement Picture Window
- Direct Set Picture Window
- Bow/Bay
- Architectural Shapes
- Double Hung with Eyebrow Plant
- Patio Door
- Swing Door



Casement



Awning





## COMPOSITWOOD ADVANTAGES

### An Engineered Composite that's Better than Wood

- More energy-efficient - lowest thermal conductivity (K-Value).
- Superior screw retention - 5 times better than fiberglass.
- Superior surface finish and durability to avoid maintenance.
- Old world craftsmanship of real wood windows.
- Very low air infiltration rates save energy.
- Cannot absorb water or moisture - will not rot.
- Insect-proof.
- Will not host mold or mildew.
- Superior dent resistance.
- Impervious to salt-air/corrosion for coastal climates.
- Optional real wood interior veneers are stainable/paintable.
- Recycleable.
- Limited Lifetime Warranty.

### Compared to CompositWood:

#### Wood

- Fails due to moisture, humidity, salt air, rot, fungus, insects – especially underneath metal or vinyl cladding due to heat build-up causing expansion and contraction..
- 24% worse thermal value.
- Easily dented.
- Exterior clad painted color scratches easily.
- Inferior screw retention.
- Most offer less than 20 year profile warranty.

#### Fiberglass

- Difficult, costly to fabricate & install.
- 54% worse thermal value.
- Loose corner joinery; requires caulking = risk of installation liability.
- Requires painting – easily scratched.
- Not easy to end-of-life recycle.
- Can't bend specialty shapes.
- Must be painted and requires maintenance.



Patio Door - 4 Lite with Transoms



Swing Door



Architectural Shapes







## DURALITE™ SPACER

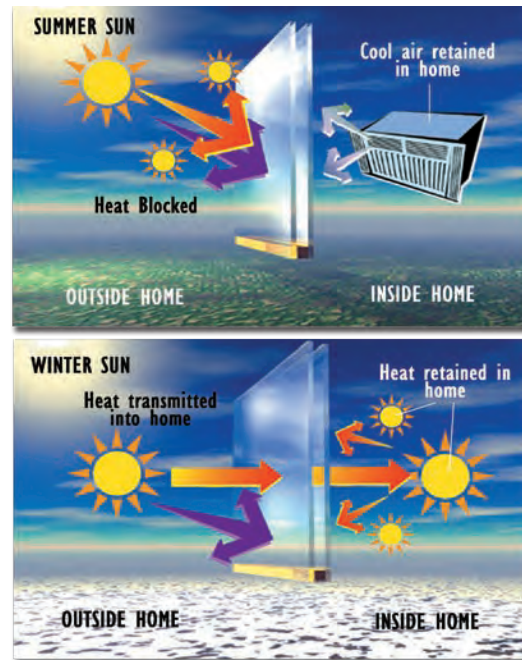
Our Duralite Spacer System insulates the edge of glass better than a solid foam or metal spacer. It is hollow, trapping air for maximum thermal performance. The patented air pocket design creates the lowest U-value available.

CompositWood Architectural Series windows have been designated as “Envirosealed” windows through the use of the Duralite Spacer System technology, which saves energy, saves money and helps to save the environment.

## PERFORMANCE FOR TOMORROW WITH GUARDIAN CLIMAGUARD™ GLASS

All low E glass is not the same. ClimaGuard glass has superior heat reflective coatings - microscopically thin layers of metal and metal oxide that filter energy by keeping warmth inside in winter and outside in summer. ClimaGuard has a unique combination of patented technologies that will provide superior energy protection and natural light, day after day, year after year.

## CLIMAGUARD™ LOW E GLASS AND ARGON GAS ADD COMFORT AND ENERGY SAVINGS



Low E is a transparent metallic oxide coating applied onto a glass surface. The coating allows short-wave energy to pass through but reflects long-wave infrared energy, which lowers the U-value and that means more energy savings.

An odorless, colorless, tasteless, non-toxic gas, argon is six times denser than air. It is used to replace air between the glass panes to reduce thermal energy transfer and heat loss.

## CERTIFICATIONS

Not all windows are NFRC certified. CompositWood windows meet and exceed the highest standards of energy efficiency. **All** CompositWood windows are NFRC certified, ENERGY STAR qualified and are further accredited by Keystone Certification, a private 3rd party window testing laboratory. Many CompositWood windows go well beyond ENERGY STAR qualifications and are designated “Most Efficient” ENERGY STAR products of 2015.



 National Fenestration Rating Council® <b>CERTIFIED</b>	<b>Interstate Window &amp; Door Co.</b> 570 - 850 - 2611  <b>Series 9400 CompositWood®</b> Low E/Argon/Krypton - Fuel Saver Plus Vertical Slider IBM - K - 19 - 00007 - 00001
<b>ENERGY PERFORMANCE RATINGS</b>	
U-Factor (U.S./I-P)	Solar Heat Gain Coefficient
<b>0.17</b>	<b>0.21</b>
<b>ADDITIONAL PERFORMANCE RATINGS</b>	
Visible Transmittance	_____
<b>0.38</b>	
<small>Manufacturer stipulates that these ratings conform to applicable NFRC procedures for determining whole product performance. NFRC ratings are determined for a fixed set of environmental conditions and a specific product size. NFRC does not recommend any product and does not warrant the suitability of any product for any specific use. Consult manufacturer's literature for other product performance information. <a href="http://www.nfrc.org">www.nfrc.org</a></small>	
<b>ENERGY STAR® Qualified</b> In All 50 States	



## GLASS PACKAGES - INCREDIBLE THERMAL VALUES

ALL COMPOSITWOOD WINDOWS ARE ENERGY STAR QUALIFIED



STANDARD

### STANDARD

Double Pane, Duralite Spacer with Climaguard Low E glass and Argon gas in the chamber.



\*U-factor:

- .25 - Double Hung
- .23 - Casement, Awning
- .21 - Double Hung with additional Low E on interior surface, IS-20 glass

\* U Factor: Measures how well a window prevents heat from escaping. The lower the U Value, the better the window is at keeping heat in and the more energy efficient it is. NFRC certified ratings based on full glass and frame - whole window testing.

.20 - Casement, Awning with additional Low E on interior surface, IS-20 glass



FUEL SAVER

### FUEL SAVER™

Triple Pane, Duralite Spacer with 2 panes of Climaguard Low E glass and Argon gas in both chambers.

• \*U-factor:

- .19 - Double Hung
- .17 - Casement, Awning



### FUEL SAVER PLUS

Triple Pane, Duralite Spacer with 2 panes of Climaguard Low E glass, Krypton gas in one and Argon gas in the other chamber.

• \*U-factor:

- .17 - Double Hung
- .15 - Casement/Awning



### FUEL SAVER MAX

Triple Pane, Duralite Spacer with 2 panes of Climaguard Low E glass, Krypton gas in both chambers.

• \*U-factor:

- .16 - Double Hung \*\*
- .14 - Casement/Awning

\*\* Certification pending at time of printing.



These products are designated as Most Efficient ENERGY STAR products of 2015.



New **OptiGas Calibration System** verifies thermal performance and assures precise gas fill in each window.

## R-SERIES

### Radiant Insulated Glass

R-Series is a patented radiant glass technology that produces thermal energy. This technology provides transparent insulation by creating a perfect barrier between the building envelope and the exterior environment and can be used as a primary or auxiliary heat source. For additional information, please contact your CompositWood dealer.





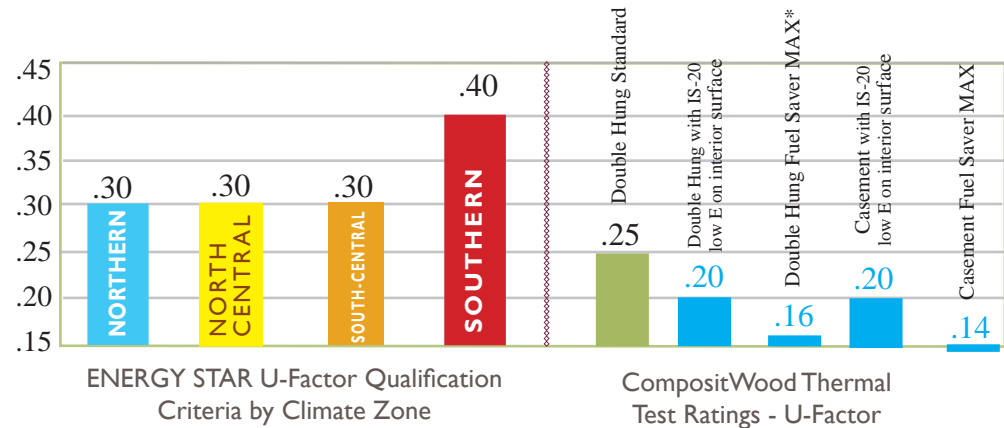
Today  
CompositWood  
Architectural  
Series provides  
extreme energy  
efficiency  
that exceeds  
energy saving  
qualifications  
well into the  
future.

## EXTREME ENERGY EFFICIENCY

With high thermal performance values, all CompositWood® Architectural Series windows far exceed ENERGY STAR criteria and many are recognized as ENERGY STAR "Most Efficient." Our products are AAMA and NFRC certified, then independently 3rd party verified to further ensure they meet or exceed industry structural and energy efficiency standards.

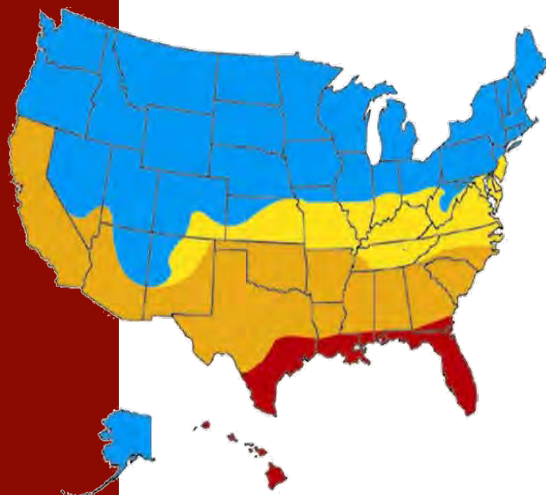
CompositWood Architectural Series windows can more than DOUBLE the ENERGY STAR U-factor insulating efficiency value of the most extreme northern climate, and exceed by over FOUR TIMES the ENERGY STAR U-factor window insulating qualification for the southern climate zone.

Lower is Better ↓



\* Certification pending at time of printing

## ENERGY STAR CLIMATE ZONE MAP



- Northern - Mostly Heating
- North/Central - Heating & Cooling
- South/Central - Cooling & Heating
- Southern - Mostly Cooling

### ENERGY STAR 2015 Qualification Criteria for Residential Windows

Climate Zone	U-Factor	SHGC
Northern	≤ 0.30	Any
North Central	≤ 0.30	≤ 0.40
South Central	≤ 0.30	≤ 0.25
Southern	≤ 0.40	≤ 0.25

### ENERGY STAR 2015 Qualification Criteria for Residential Doors > 1/2 Lite

U-Factor ≤ 0.30  
 SHGC ≤ 0.40 in the Northern Zone  
 SHGC ≤ 0.40 in the North-Central Zone  
 SHGC ≤ 0.25 in the South-Central and Southern Zones



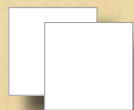
Products that are recognized as the **Most Efficient of ENERGY STAR in 2015** meet rigorous energy efficiency performance levels set by the U.S. Environmental protection Agency. CompositWood has been awarded the **ENERGY STAR Most Efficient** mark for 2015.



# CompositWood Architectural Series OPTIONS

## Color Options

### Finishes



SuperCap White interior  
SuperCap White exterior



Real Ponderosa Pine interior  
SuperCap White exterior



SuperCap White interior  
SuperCap Bronze exterior

Due to printing limitations, all colors and finishes shown are approximate.

### 14 In-Stock Paint Colors



Plus 34  
Mastic® Vinyl  
Siding  
Colors  
plus  
**Unlimited  
Color Match  
Colors!**

## Grid Options

Grids add a distinctive look to your home's curb appeal. Grids Between Glass (GBGs) afford easy cleaning. Simulated Divided Lites (SDLs) are permanently adhered to the glass panes inside and out and are designed to look like a true multi-paned window.



Colonial  
Flat (GBGs)

Simulated  
Divided Lites  
(SDLs)



Colonial  
Contour  
(GBGs)

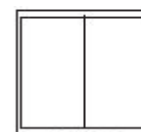


Polished Brass  
(GBGs)

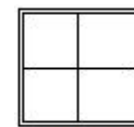
Exterior SDLs are not available with Fuel Saver glass package.



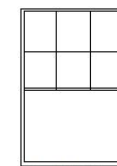
### GRID SUGGESTIONS



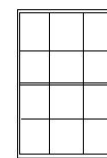
1V0H



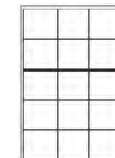
1V1H



2V1H Top Sash



2V1H



2V2H



Prairie



Prairie

## Hardware Options

CompositWood Architectural Series windows utilize only the strongest, most attractive, easiest operating and highest performing hardware available in today's market.

### DOUBLE HUNG CAM LOCKS



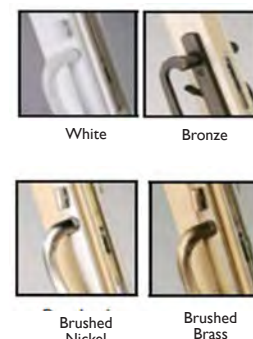
White  
Adobe  
Brushed  
Nickel

Bronze  
Brushed  
Brass

### CASEMENT/AWNING WINDOW CRANKS



### PATIO DOOR HARDWARE



### SWING DOOR HARDWARE





## OUR VISION

### TO PROVIDE A SUPERIOR CUSTOMER EXPERIENCE

- ▼ Many companies promise quality but don't have the talent, experience or qualified dealer installers to deliver it. We're different - we only sell through qualified dealers. We help ensure that the people who work on your home will arrive with the skills necessary to do the very best installation. We consistently maintain an experienced workforce. Longevity of many employees at Interstate exceeds decades and generations, assuring the experience of our staff. We know the value of treating customers and employees with honesty and integrity. Integrity and honesty are more than just words – it's how we run our company every day.

### TO LISTEN AND RESPOND

- ▲ Our reputation has been built on a persistence in working with customers to complete projects from start to finish. In fact, our future depends on it. We will treat you with personal respect and do our best to ensure you are fully satisfied with our windows and project experience.

### TO BUILD ONLY THE BEST PRODUCTS - 100% AMERICAN MADE

Interstate was the first window company to launch a vinyl window for the new construction market, and the first to offer a snap-on j-channel. Now we are the first to launch a full line of CompositWood® and CompositWood *Architectural Series* windows, our premier window line, which combines the most advanced framing materials and insulated glass packages in the industry to deliver the best energy performance, operation and durability. Every part that goes into CompositWood is made in America.

We outsource very few components so we can control quality and delivery times. For example, we build our own cutting edge insulated glass units, grids, screens and specialty angle shaped windows in-house. CompositWood *Architectural series* windows are manufactured by a proven company that builds products engineered to last a lifetime.

### AWARDS

- Certificate of Special Recognition for Product Innovation - United States Senate
- Citation from Senate of Pennsylvania for Product Innovation
- Citation from Pennsylvania House of Representatives for Product Innovation
- 2013 Manufacturing Excellence Award - Pennsylvania Manufacturers' Association
- Northeast Pennsylvania Manufacturers & Employers Association 2013 Award for Excellence for Product Innovation
- National Assn. of Manufacturers Excellence Award 2013 for Product Innovation
- Manufacturer Product Innovation Award 2013 from Schuylkill County, PA



#### 1986

Interstate donated windows used in the Restoration Pavilion of the Statue of Liberty National Monument



#### Administration

322 LAUREL ST. PITTSBURGH, PENNSYLVANIA 15222

#### Manufacturing

3000 N. TOWNSHIP BLVD. PITTSBURGH, PENNSYLVANIA 15222

Toll Free **800.338.9997** Phone **514.655.2811**

Web [www.interstatewindowsanddoors.com](http://www.interstatewindowsanddoors.com)